

LeilOX

2.7/3.5 Locking System



Special Thanks to Dr. Khalil Abaya



LeiLOX 2.7/3.5 Locking System

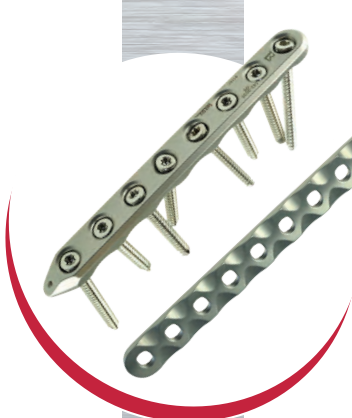
Multiaxial Locking

The screws can be locked in 90° angle with a 12° deviation in any direction. This allows you to angle specific screws away from vital structures. The robust star-drive screw head locks firmly into the plate.



Reconstruction Plates

A reconstruction plate is needed when a plate needs to be adapted to accommodate complex bony anatomy. Therefore, we have engineered bending irons that comfortably bend the plates in any direction.



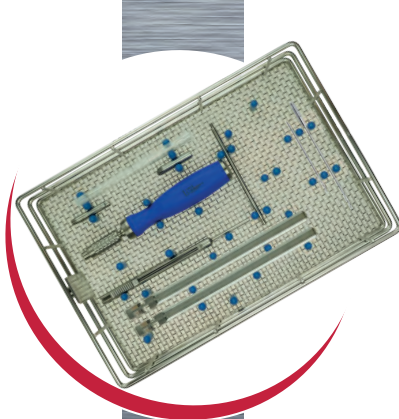
Straight Plates

Straight plates are needed in strong bones that face high forces. With our bending irons, they can be bent vertically. Straight plates feature limited contact dynamic compression to minimize vascular damage to the plated bone segment.



Interchangeable 2.7 & 3.5mm Screws

Because the screw heads are identical, all stainless steel 2.7/3.5 LeiLOX plates (TPLO and fracture systems) work with 2.7mm as well as 3.5mm screws in all plate sizes. This offers flexibility and saves on inventory cost.



Universal Instrumentation

Locking drill guides, screw drivers, depth gauge, etc. are identical and interchangeable in all of our 2.7/3.5 systems (Fracture Systems as well as TPLO and CBLO).

2.7/3.5 Straight Plates Sets

2.7/3.5 Straight Implant Set

Contains:

- 1 Straight Implant Tray
- 1 Screwcrack 2.7
- 1 Screwcrack 3.5
- 1 of each Plate
(24 pcs. total)
- 5 of each 2.7 Locking Screw
(10-52mm, 110 pcs.)
- 5 of each 3.5 Locking Screw
(10-70mm, 155 pcs.)

Complete-Set

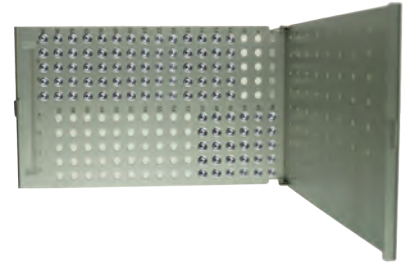
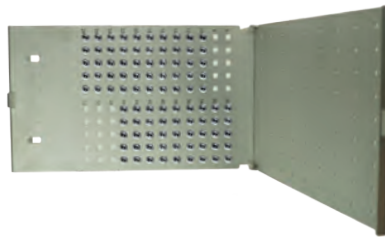
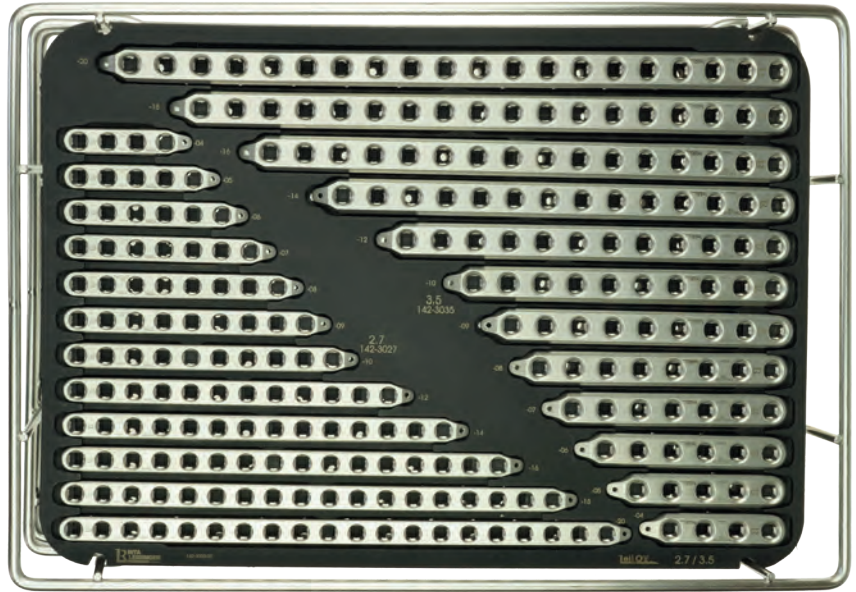
142-3000-00

Starter-Set

142-3001-00

Tray without contents.

142-3010-02



2.7/3.5 LeiLOX Instrument Set

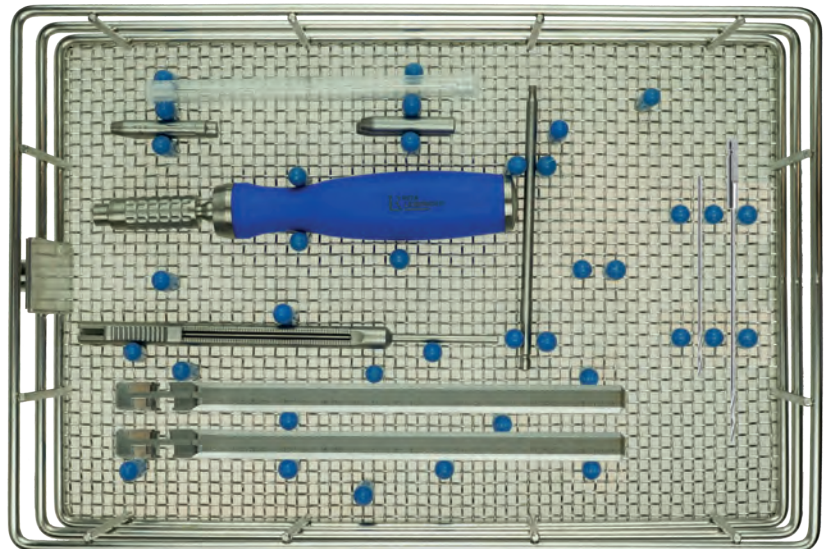
Contains:

- 1 2.7/3.5 Instrument Tray
- 2 Drills (2.0 & 2.5mm)
- 1x K-Wires (1.0mm)
- 2x2 Locking Drill Guides
- 1 Screwdriver Handle
- 1 Screwdriver Shaft
- 1 Depth Gauge

142-3010-00

Tray without contents.

142-3010-01



Sterilization Tray

for Trays, 310x190x130mm
blue (image)

150-5401-30

green

150-5402-30



2.7 LeiLOX Boneplate

multiaxial locking, straight, stainless steel
compatible with 2.7 & 3.5mm LeiLOX Screws



Product Code	Holes	Length (mm)
142-3027-04	4	40
142-3027-05	5	49
142-3027-06	6	58
142-3027-07	7	67
142-3027-08	8	76
142-3027-09	9	85

Product Code	Holes	Length (mm)
142-3027-10	10	94
142-3027-12	12	112
142-3027-14	14	130
142-3027-16	16	148
142-3027-18	18	166
142-3027-20	20	184



3.5 LeiLOX Boneplate

multiaxial locking, straight, stainless steel
compatible with 2.7 & 3.5mm LeiLOX Screws



2735.leibinger.vet

Product Code	Holes	Length (mm)
142-3035-04	4	49
142-3035-05	5	60
142-3035-06	6	71
142-3035-07	7	82
142-3035-08	8	93
142-3035-09	9	104

Product Code	Holes	Length (mm)
142-3035-10	10	115
142-3035-12	12	137
142-3035-14	14	159
142-3035-16	16	181
142-3035-18	18	203
142-3035-20	20	225

2.7/3.5 Reconstruction Sets

2.7/3.5 Reconstruction Implant Set

Contains:

- 1 Reconstruction Implant Tray
- 1 Screwrack 2.7
- 1 Screwrack 3.5
- 1 of each Plate (24 pcs. total)
- 5 of each 2.7 Locking Screw (10-52mm, 110 pcs.)
- 5 of each 3.5 Locking Screw (10-70mm, 155 pcs.)

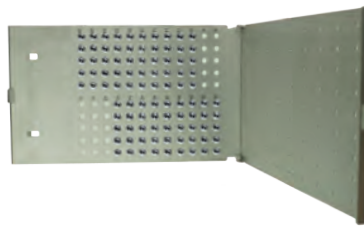
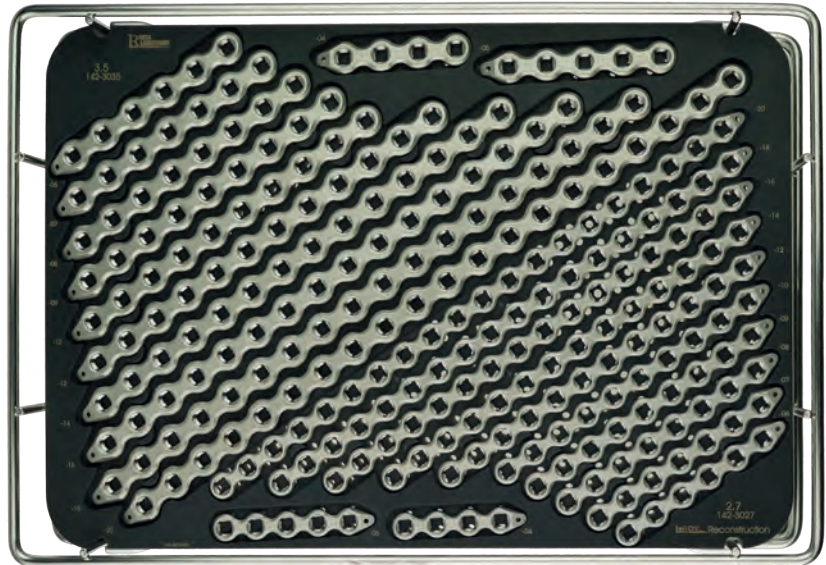
142-3100-00

Starter Set

142-3101-00

Tray without contents.

142-3100-02



2.7/3.5 LeiLOX Instrument Set

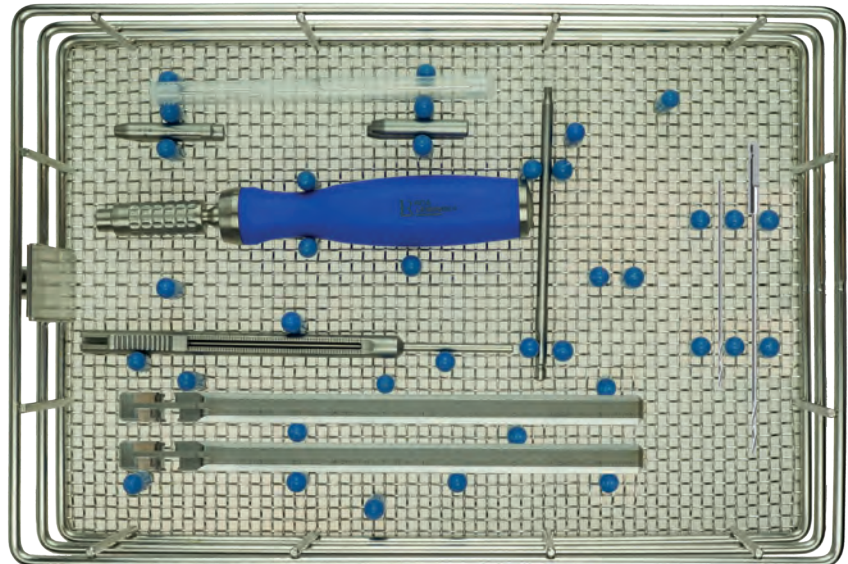
Contains:

- 1 2.7/3.5 Instrument Tray
- 2 Drills (2.0 & 2.5mm)
- 1x K-Wires (1.0mm)
- 2x2 Locking Drill Guides
- 1 Screwdriver Handle
- 1 Screwdriver Shaft
- 1 Depth Gauge

142-3010-00

Tray without contents.

142-3010-01



Sterilization Tray

for Trays, 310x190x130mm
blue

150-5401-30

green

150-5402-30



2.7 LeiLOX Reconstruction Plate

multiaxial locking, bendable, stainless steel
compatible with 2.7 & 3.5mm LeiLOX Screws



2735.leibinger.vet



Product Code	Holes	Length (mm)
142-3127-04	4	40
142-3127-05	5	49
142-3127-06	6	58
142-3127-07	7	67
142-3127-08	8	76
142-3127-09	9	85

Product Code	Holes	Length (mm)
142-3127-10	10	94
142-3127-12	12	112
142-3127-14	14	130
142-3127-16	16	148
142-3127-18	18	166
142-3127-20	20	184

3.5 LeiLOX Reconstruction Plate

multiaxial locking, bendable, stainless steel
compatible with 2.7 & 3.5mm LeiLOX Screws



Product Code	Holes	Length (mm)
142-3135-04	4	49
142-3135-05	5	60
142-3135-06	6	71
142-3135-07	7	82
142-3135-08	8	93
142-3135-09	9	104

Product Code	Holes	Length (mm)
142-3135-10	10	115
142-3135-12	12	137
142-3135-14	14	159
142-3135-16	16	181
142-3135-18	18	203
142-3135-20	20	225



Screws 2.7/3.5, locking, Stainless Steel

2.7 Locking Cortical Screw Stainless Steel

for LeiLox Locking System, Star Drive T10
self-holding (T10 Shaft from Rita Leibinger needed)
self-tapping with three flute cutting edge



Length (mm)	Product Code
10	242-127-10
12	242-127-12
14	242-127-14
16	242-127-16
18	242-127-18
20	242-127-20
22	242-127-22
24	242-127-24
26	242-127-26
28	242-127-28
30	242-127-30
32	242-127-32
34	242-127-34
36	242-127-36
38	242-127-38
40	242-127-40
42	242-127-42
44	242-127-44
46	242-127-46
48	242-127-48
50	242-127-50

3.5 Locking Cortical Screw Stainless Steel

for LeiLox Locking System, Star Drive T10
self-holding (T10 Shaft from Rita Leibinger needed)
self-tapping with three flute cutting edge



Length (mm)	Product Code
10	242-135-10
12	242-135-12
14	242-135-14
16	242-135-16
18	242-135-18
20	242-135-20
22	242-135-22
24	242-135-24
26	242-135-26
28	242-135-28
30	242-135-30
32	242-135-32
34	242-135-34
36	242-135-36
38	242-135-38
40	242-135-40
42	242-135-42
44	242-135-44
46	242-135-46
48	242-135-48
50	242-135-50
52	242-135-52
54	242-135-54
56	242-135-56
58	242-135-58
60	242-135-60
62	242-135-62
64	242-135-64
66	242-135-66
68	242-135-68
70	242-135-70

Screwdriver Shaft Star-Drive 10

2.7/3.5 Instrument (LeiLOX)

2.7 Cortical Screw (Non-Locking) Stainless Steel

Star Drive T10

self-holding (T10 Shaft from Rita Leibinger needed)

self-tapping with three flute cutting edge



Länge (mm)	Product Code
16	245-627-16
18	245-627-18
20	245-627-20
22	245-627-22
24	245-627-24
26	245-627-26
28	245-627-28
30	245-627-30
32	245-627-32
34	245-627-34
36	245-627-36
38	245-627-38
40	245-627-40

3.5 Cortical Screw (Non-Locking) Stainless Steel

Star Drive T10

self-holding (T10 Shaft from Rita Leibinger needed)

self-tapping with three flute cutting edge



Länge (mm)	Product Code
16	245-635-16
18	245-635-18
20	245-635-20
22	245-635-22
24	245-635-24
26	245-635-26
28	245-635-28
30	245-635-30
32	245-635-32
34	245-635-34
36	245-635-36
38	245-635-38
40	245-635-40
45	245-635-45
50	245-635-50
55	245-635-55
60	245-635-60



Screwdriver Shaft Star-Drive 10

self-holding

128-2735-10



Screwdriver Handle

Silicone

sterilizable up to 134°C / 273°F

247-0102-00



Torque Limiting Screwdriver

Torque 3 Nm

dark blue, Silicone, straight, AO
sterilizable up to 134°C / 273°F

247-0104-00

